

LISTENING GUIDE

George Frideric Handel
(1685–1759)

Hallelujah from Messiah
(1742)

1. ORCHESTRA begins

2. CHORUS enters... *forte* (loud)



Hal le lu jah,

#2 repeats at a _____ pitch level

3. TEXTURE changes to MELODY ALONE (UNISON)

QUESTION: "For the Lord God omnipotent reigneth"

TEXTURE changes back to ALL CHORDS

ANSWER: "Hallelujah • Hallelujah • Hallelujah • Hallelujah"

Q&A repeats at a _____ pitch level

4. FUGATO: (in CONTRAPUNTAL TEXTURE)



For the Lord God om ni po tent reign eth

5. TEXTURE changes back to ALL CHORDS with DYNAMIC surprises!

piano (softly):

“The kingdom of this world is become...

subito forte (suddenly loud):

the kingdom of our Lord and of his Christ”

6. 2nd FUGATO:



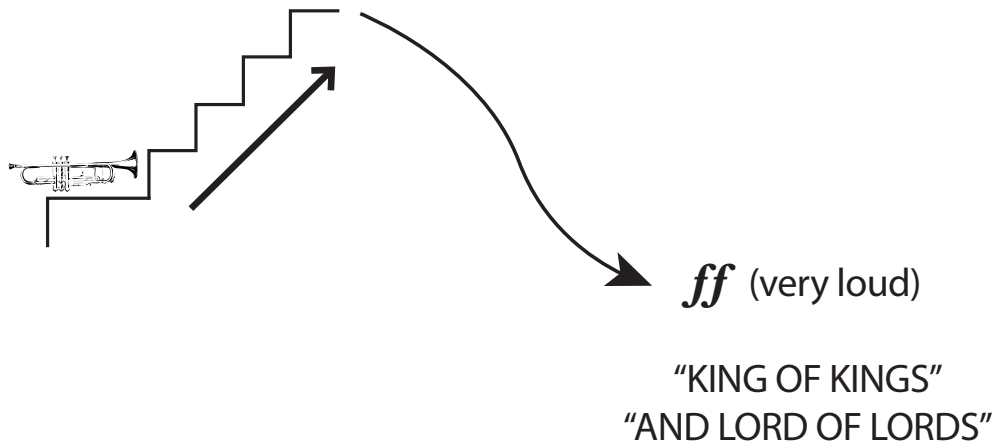
7. ASCENDING SEQUENCE begins

QUESTION: “KING OF KINGS”

ANSWER: “forever and ever, Hallelujah, Hallelujah!”

QUESTION: “AND LORD OF LORDS”

ANSWER: “forever and ever, Hallelujah, Hallelujah!”



8. 3rd brief FUGATO: “and he shall reign forever and ever”

fortissimo (very loud)

9. QUESTION: "KING OF KINGS"

ANSWER: "forever and ever"

QUESTION: "AND LORD OF LORDS"

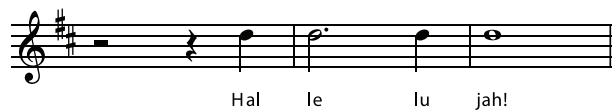
ANSWER: "Hallelujah, Hallelujah!"

10. ALL CHORDS TEXTURE returns as STRINGS go "ecstatic"!



11. TONIC PEDAL established as IV-I PLAGAL CADENCE "rocks"

SILENCE



Listening Guide by George Marriner Maull. All rights reserved.

Recommended YouTube Performances:

Academy of St. Martin in the Fields • Sir Neville Marriner, conducting • <https://bit.ly/3bPEAAZ>

Discovery Orchestra Chat 55 • <https://bit.ly/3o9ZHnk>